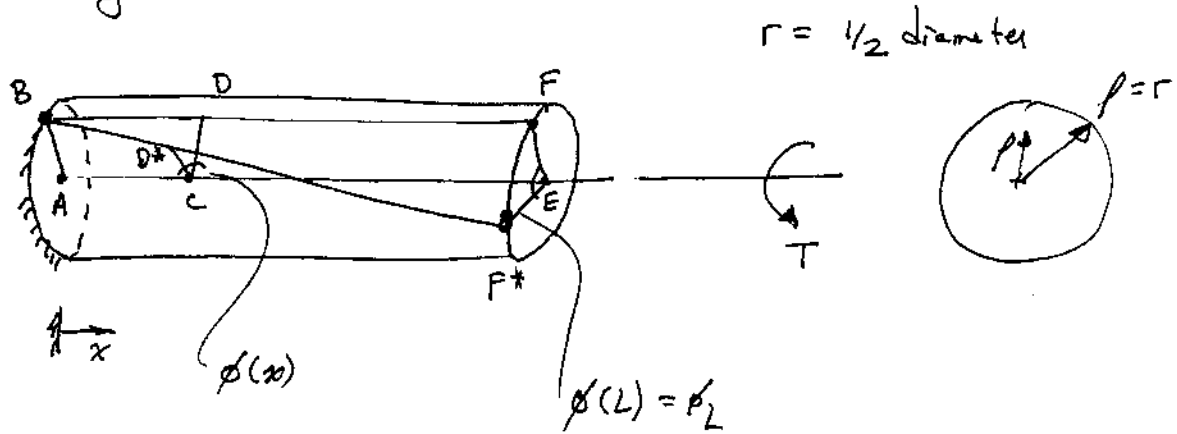
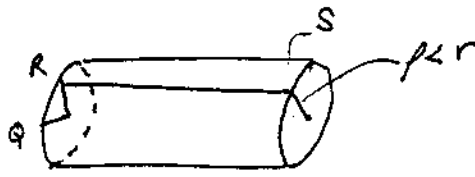


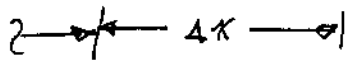
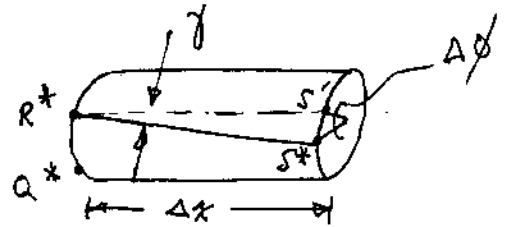
4. Shearing Strains



segment (no load)



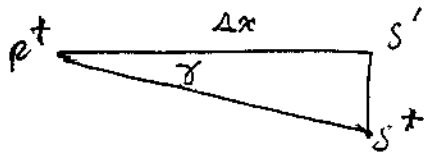
after load



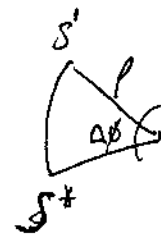
S' is drawn straight across from R^*

$$\gamma = \angle Q^*R^*S' - \angle Q^*R^*S^*$$

$$\gamma = \frac{\pi}{2} - \angle Q^*R^*S^* = \angle S'R^*S^*$$



SIDE VIEW



END VIEW